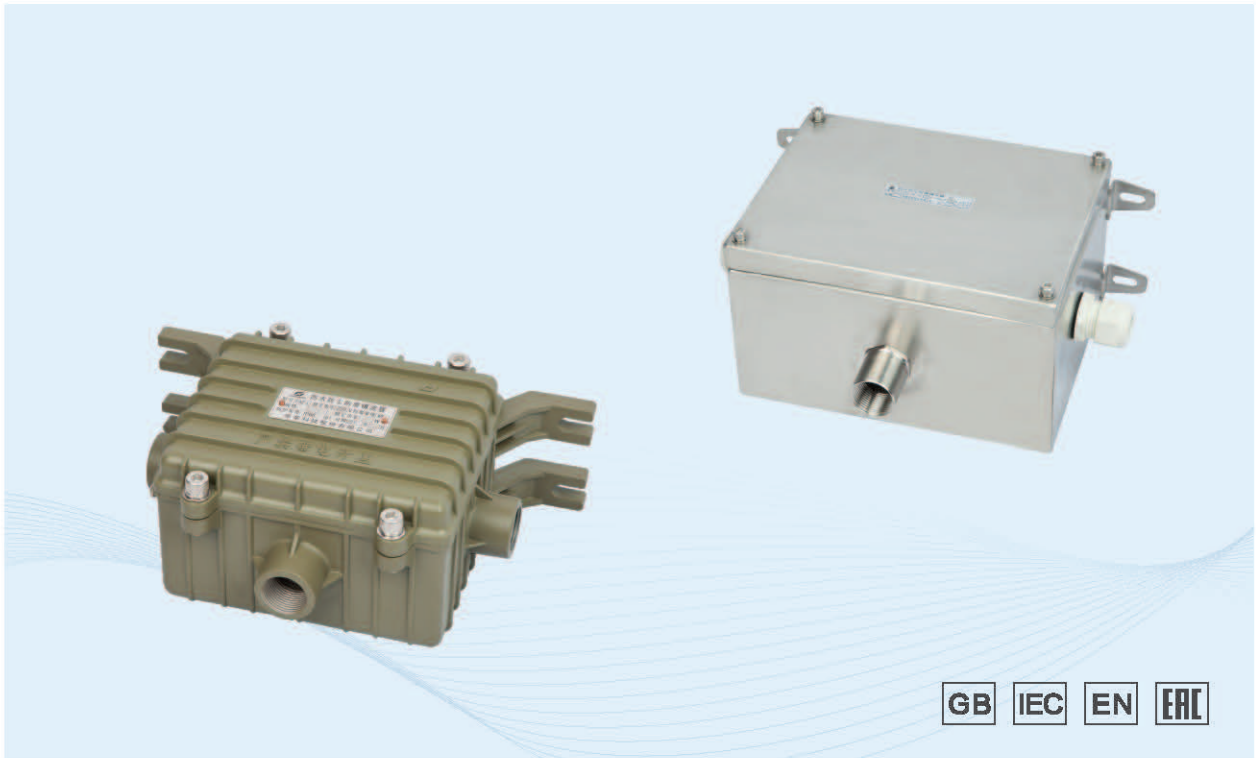


FAZ 系列防水防尘防腐镇流器

Series Weatherproof Ballasts

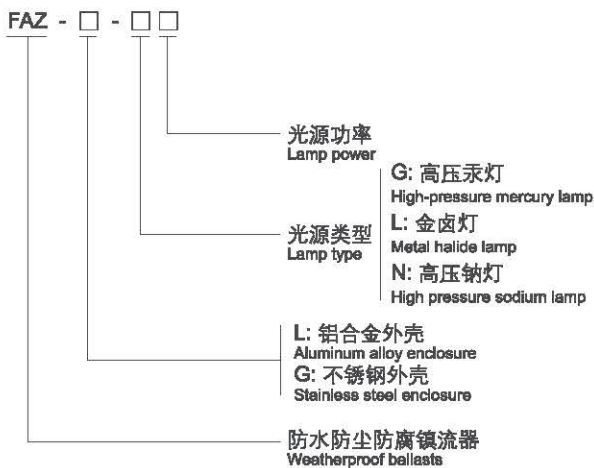


Weatherproof Light Fittings
防水防尘防腐灯具系列



GB IEC EN EAC

◆ 型号规格含义/Catalogue number logic



◆ 产品特点/Product features

- ◆ FAZ-L外壳采用铝合金压铸成型，表面高压静电喷塑，抗弱酸、弱碱腐蚀；
- ◆ FAZ-G外壳采用优质不锈钢材料折弯焊接而成，抗强酸、强碱、盐腐蚀，防水、防尘、防腐；
- ◆ 与单盏灯具配套使用，兼做接线、分线箱；高功率因数， $\cos\Phi > 0.90$ ；
- ◆ 内装镇流器技术参数同飞利浦、欧司朗、亚明，建议用户配置华荣、飞利浦、欧司朗、亚明品牌光源；
- ◆ 防护等级IP66；引入装置 $\Phi 10\text{mm} \sim \Phi 14\text{mm}$ 。
- ◆ Die-casting aluminum alloy enclosure for FAZ-L, high-voltage electrostatic powder coated surface, weak acids and weak alkali resistance.
- ◆ FAZ-G enclosure is made of high quality stainless steel through bending and welding, with strong acid resistance, strong alkali resistance, salt corrosion resistance, waterproof, dustproof and corrosion-proof performance.
- ◆ Used as terminal box and branching box, together with single one lamp, high power factor, $\cos\Phi > 0.90$.
- ◆ The technical parameters of built-in ballast are the same as Warom, Philips, Osram and Yaming lamp, so Warom, Philips, Osram, Yaming lamp is recommended.
- ◆ Degree of protection IP66; Cable gland $\Phi 10\text{mm} \sim \Phi 14\text{mm}$.



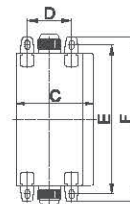
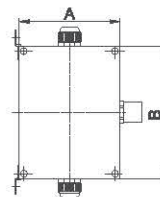
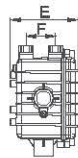
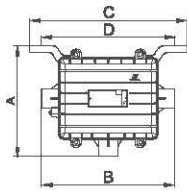
Weatherproof Light Fittings
防水防尘防腐灯具系列

◆ 产品规格/Product specifications

| 型号规格 Type | 额定功率(W) Rated power | 壳体类型 Enclosure type | 重量(kg) Weight | |
|--------------|------------------------|------------------------|------------------|-----|
| FAZ-L-G80 | 80 | I | 2.8 | |
| FAZ-L-G125 | 125 | | 3.27 | |
| FAZ-L-L70 | 70 | | 2.95 | |
| FAZ-L-L100 | 100 | | 3.47 | |
| FAZ-L-L150 | 150 | | 3.78 | |
| FAZ-L-N70 | 70 | | 2.97 | |
| FAZ-L-N100 | 100 | | 3.42 | |
| FAZ-L-N110 | 110 | | 3.38 | |
| FAZ-L-N150 | 150 | | 3.66 | |
| FAZ-L-G175 | 175 | | 3.63 | |
| FAZ-L-G250 | 250 | | 3.77 | |
| FAZ-L-L250 | 250 | | 3.97 | |
| FAZ-L-N250 | 250 | | II | 7.3 |
| FAZ-L-N400 | 400 | | | 9.1 |
| FAZ-L-L400 | 400 | 7.5 | | |
| FAZ-L-G400 | 400 | 7.3 | | |

| 型号规格 Type | 额定功率(W) Rated power | 壳体类型 Enclosure type | 重量(kg) Weight | |
|--------------|------------------------|------------------------|------------------|-----|
| FAZ-G-G80 | 80 | I | 3.0 | |
| FAZ-G-G125 | 125 | | 3.6 | |
| FAZ-G-L70 | 70 | | 3.2 | |
| FAZ-G-L100 | 100 | | 3.6 | |
| FAZ-G-L150 | 150 | | 3.6 | |
| FAZ-G-N70 | 70 | | 3.0 | |
| FAZ-G-N100 | 100 | | 3.6 | |
| FAZ-G-N110 | 110 | | 3.6 | |
| FAZ-G-N150 | 150 | | 3.8 | |
| FAZ-G-G175 | 175 | | 3.8 | |
| FAZ-G-G250 | 250 | | 3.9 | |
| FAZ-G-L250 | 250 | | 3.9 | |
| FAZ-G-N250 | 250 | | II | 4.7 |
| FAZ-G-N400 | 400 | | | 6.5 |
| FAZ-G-L400 | 400 | 4.9 | | |
| FAZ-G-G400 | 400 | 4.7 | | |

◆ 外形及安装举例/Outline and mounting type (mm)



| 外壳类型 Enclosure | A | B | C | D | E | F |
|-----------------------------|-----|-----|-----|-----|-----|----|
| I (铸铝) Casting aluminum | 203 | 256 | 270 | 240 | 116 | 50 |
| II (铸铝) Casting aluminum | 224 | 306 | 300 | 270 | 136 | 60 |

| 外壳类型 Enclosure | A | B | C | D | E | F |
|-----------------------------|-----|-----|-----|----|-----|-----|
| I (不锈钢) Stainless steel | 152 | 170 | 122 | 70 | 194 | 211 |
| II (不锈钢) Stainless steel | 160 | 210 | 122 | 70 | 234 | 251 |

◆ 订货须知/Ordering Information

- ◇ 按照产品型号规格说明逐条选择，例如：FAZ-L-N250表示为高压钠灯250W，铝合金壳体，防水防尘防腐镇流器；
- ◇ 镇流器配套的光源建议选用华荣、飞利浦、欧司朗、亚明品牌；中国标准、国际标准、欧盟标准产品金卤灯250W、400W需配置欧标光源；
- ◇ 铝合金镇流器常规配置为钢管布线，如需电缆布线请注明；
- ◇ 不锈钢镇流器常规配置为电缆布线，如需钢管布线请注明；
- ◇ 如需美标准镇流器请注明。
- ◇ Follow the product catalogue number logic for selection. For example: FAZ-L-N250 means 250W high pressure sodium lamp, aluminum alloy enclosure, weatherproof ballasts.
- ◇ Warom, Philips, Osram and Yaming lamps are recommended to match the ballast; European standard light source should be provided for Chinese national standard, International standard and European standard 250W and 400W metal halide lamp.
- ◇ Steel pipe wiring is provided for aluminum alloy ballast; please specify if cable wiring is needed.
- ◇ Cable wiring is provided for stainlesssteel ballast, please specify if steel pipe wiring is needed.
- ◇ Please specify if American-Standard ballasts are needed.