

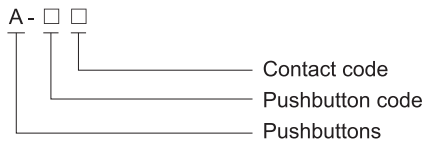
Components for BZC Control Stations HA Flameproof pushbutton



- ◆ Explosion protection to
 - CENELEC
 - IEC
 - NEC
- ◆ Can be used in
 - Zone 1 and Zone 2
 - Zone 21 and Zone 22
 - Class I, Zone 1 and Zone 2
 - Class I, Division 1, Groups A, B, C, D
- ◆ Five different ways of operation
 - Spring-return pushbutton
 - Key-operated pushbutton
 - Mushroom stay-put emergency pushbutton
 - Mushroom turn-to-release emergency pushbutton
 - Rotary pushbutton
- ◆ Mushroom stay-put emergency pushbutton/ mushroom turn-to-release emergency pushbutton can be equipped with protection cover, please specify when ordering. Material of protection cover: stainless steel and PC, please specify when ordering.

■ Catalogue number logic

HA (A for short)



| Technical data | |
|---------------------------------|---|
| HA Flameproof pushbutton | |
| Explosion protection | |
| Gas explosion protection | ⊕ II 2 G Ex db IIC Gb |
| Dust explosion protection | ⊕ II 2 D Ex tb IIIC Db |
| Certificates | CML 17 ATEX 1289U; IECEx CML 17.0161U |
| Conformity to standards | EN 60079-0, EN 60079-1, EN 60079-31 IEC 60079-0, IEC 60079-1, IEC 60079-31 |
| Rated voltage | 660V AC; 400V DC |
| Rated current | 10A(for 660V AC); 6A(for 400V DC) |
| Degree of protection | IP66 |
| Ambient temperature | -60°C~+70°C |

Zones 1&2; 21&22

Components for BZC Control Stations

HA Flameproof pushbutton





| Selection table | | | | | |
|---|--|----------|---------------|-------------|------|
| Cover mounting | Specification | Code | Ordering code | Weight (kg) | |
|  | Spring-return pushbutton | ● Red | a | 40036A | 0.15 |
| | | ● Green | b | 40036B | 0.15 |
| | | ● Yellow | c | 40036C | 0.15 |
|  | Mushroom stay-put emergency pushbutton | Red | d | 40037 | 0.27 |
|  | Key-operated mushroom stay-put emergency pushbutton | Red | d | 40037A | 0.30 |
|  | Mushroom turn-to-release emergency pushbutton | Red | e | 40040 | 0.27 |
|  | Key-operated mushroom turn-to-release emergency pushbutton | Red | e | 40040A | 0.30 |
|  | Rotary pushbutton | Black | f | 40039 | 0.27 |
|  | Key-operated pushbutton | Black | g | 40038 | 0.27 |
|  | Pushbutton with indicator | ● Red | a | 40057A | 0.15 |
| | | ● Green | b | 40057B | 0.15 |
| | | ● Yellow | c | 40057C | 0.15 |
| | | ● Blue | d | 40057D | 0.15 |

Components for BZC Control Stations HA Flameproof pushbutton

Selection table of pushbutton contact

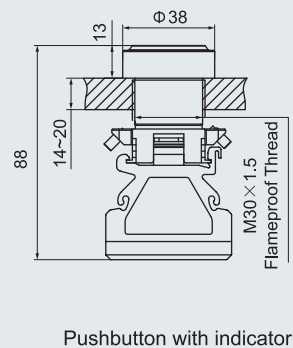
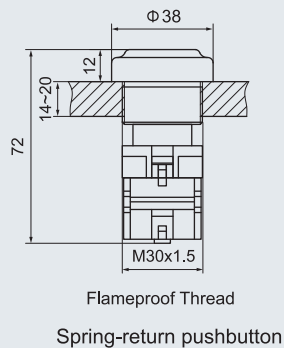
| Version | Specification | Contact code | Ordering code | Weight (kg) |
|---|---|--------------|---------------|-------------|
|  Screw type |  1NC | T1 | 40023 | 0.03 |
| |  1NO | S1 | 40024 | 0.03 |

Accessories

| Description | Material | Ordering code | Weight (kg) |
|--|-----------------|---------------|-------------|
|  Emergency pushbutton protection cover | PC | 40196 | 0.03 |
|  Emergency pushbutton protection cover | Stainless steel | 40197 | 0.15 |

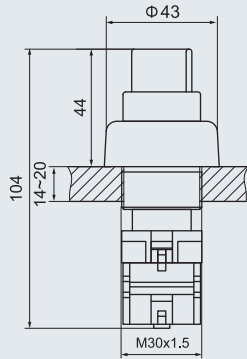


Dimension drawings (all dimensions in mm) - subject to alteration

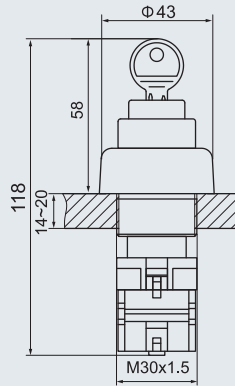


Components for BZC Control Stations HA Flameproof pushbutton

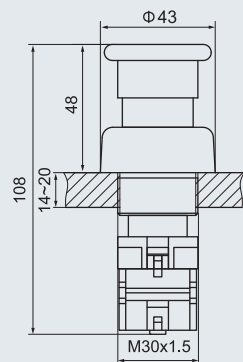
Dimension drawings (all dimensions in mm) - subject to alteration



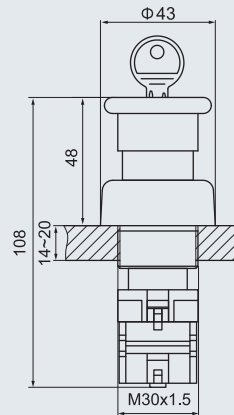
Flameproof Thread
Rotary pushbutton



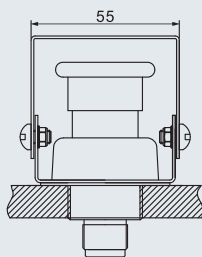
Flameproof Thread
Key-operated pushbutton



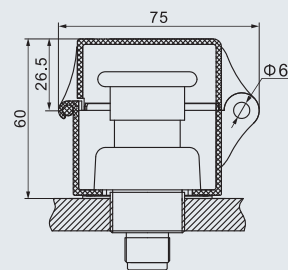
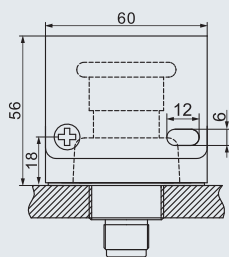
Flameproof Thread
Mushroom stay-put/ turn-to-release
emergency pushbutton



Flameproof Thread
Key-operated mushroom
stay-put emergency
pushbutton



HA Emergency pushbutton with
stainless steel protection cover



HA Emergency pushbutton with
PC protection cover

