



- ◆ Explosion protection to
 - CENELEC
 - IEC
 - NEC
- ◆ Can be used in
 - Zone 1 and Zone 2
 - Zone 21 and Zone 22
 - Class I, Zone 1 and Zone 2
 - Class I, Division 1, Groups A , B, C, D
 - Class I, Division 2, Groups A , B, C, D

- ◆ Accessories for cable gland include stopping rod, stopping plug, shroud, earth lug, etc., meeting requirements of connection between enclosure and cable gland.
- ◆ For example, the DQM-I/I Ex e stopping rod is used for DQM-I/I Ex e cable gland to plug up Ex e enclosure.
- ◆ Ex e stopping plug in plastic is used to plug up cable entries on Ex e enclosure.
- ◆ Ex db stopping plug in aluminium alloy and metal is used to plug up cable entries on Ex db enclosure.
- ◆ The shroud protects cable gland against damage.
- ◆ The earth lug between cable gland and enclosure is used for earth connection.



Zones 1&2; 21&22

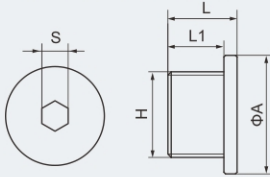
Selection table of BPT stopping plug (Ex db Ex eb)

Explosion protection Global (IECEX) Gas and dust	IECEX CQM 25.0022X Ex db IIC Gb Ex eb IIC Gb Ex tb IIIC Db
Europe (ATEX) Gas and dust	ACE25ATEX020X ⊕ II 2 G Ex db IIC Gb ⊕ II 2 G Ex eb IIC Gb ⊕ II 2 D Ex tb IIIC Db
Certificates	IECEX; ATEX; CU-TR
Degree of protection	IP66
Service temperature	-60°C~+100°C
Material	Copper-free Aluminium Alloy, galvanized carbon steel, nickel plated brass or stainless steel.
Function	Metric thread is standard type; G thread or NPT thread is optional. To be used at spare entries of explosion-proof equipment; corrosion-proof and waterproof; supplied with seal gasket (not applicable for NPT thread).

Note: 1. Please specify material when ordering. The above weight is based upon nickel plated brass.
2. Metric threads are 1.5mm pitch as standard, others thread pitch can be customized, please specify when ordering.

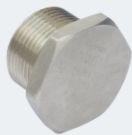


BPT Ex stopping plug

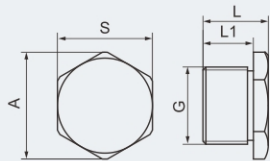


BPT stopping plug (Copper-free Aluminium Alloy)

Entry thread "H"		Dimensions(mm)				Ordering code	Weight (kg)
Metric	G	A	S	L	L1		
M20	1/2"	30	8	22	17	720001	0.05
M25	3/4"	36	8	21	17	720002	0.05
M32	1"	45	10	25	20	720003	0.05
M40	1 1/4"	54	10	25	20	720004	0.05
M50	1 1/2"	62	10	26	20	720005	0.10
M63	2"	77.5	10	26	20	720006	0.16



BPT Ex stopping plug (Metric/G)

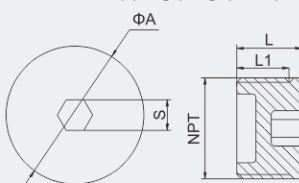


BPT stopping plug (galvanized carbon steel, nickel plated brass or stainless steel)

Entry thread "G"		Dimensions(mm)				Ordering code	Weight (kg)
Metric	G	A	S	L	L1		
M16		25	22	19	15	720025	0.05
M20	1/2"	30	27	19	15	720007	0.05
M25	3/4"	36	32	19	15	720008	0.07
M32	1"	42	38	19	15	720009	0.15
M40	1 1/4"	50	46	25	20	720010	0.17
M50	1 1/2"	60	55	25	20	720011	0.26
M63	2"	72	68	26	20	720012	0.47
M75	2 1/2"	88	83	26	20	720013	0.66
M90	3"	100	95	26	20	720014	0.90
M115	4"	127	122	26	20	720015	1.15



BPT Ex stopping plug (NPT)


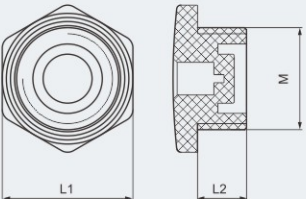


BPT stopping plug (nickel plated brass or stainless steel)

Entry thread "NPT"		Dimensions(mm)				Ordering code	Weight (kg)
NPT	A	S	L	L1			
3/8"	18	8	18	15	720026	0.05	
1/2"	22	10	18	15	720016	0.05	
3/4"	27	10	18	15	720017	0.07	
1"	34	10	22	19	720018	0.15	
1 1/4"	43	10	22	19	720019	0.17	
1 1/2"	49	19	22	19	720020	0.26	
2"	61	19	23	20	720021	0.47	
2 1/2"	74	19	33	29	720022	0.66	
3"	90	19	35	31	720023	0.90	
4"	115	19	38	34	720024	1.15	


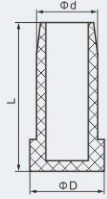


Selection table of stopping plug (Ex e, plastic)

Version	Specification	Dimensions(mm)			Ordering code	Weight(kg)
		M	L1	L2		
 <p>BPT-e Ex e stopping plug (plastic)</p> 	M16×1.5	M16×1.5	19	15	719001	0.003
				25	719002	
	M20×1.5	M20×1.5	24	15	719003	0.005
				25	719004	
	M25×1.5	M25×1.5	29	15	719005	0.005
				25	719006	
	M32×1.5	M32×1.5	41	15	719007	0.008
				25	719008	
	M40×1.5	M40×1.5	50	15	719009	0.011
				25	719010	
	M50×1.5	M50×1.5	57	15	719011	0.022
				25	719012	
	M63×1.5	M63×1.5	70	15	719013	0.040
				25	719014	
Explosion protection: Global (IECEX) IECEx CQM 16.0021X Gas and dust Ex e IIC Gb Ex tb IIIC Db IP66 Europe (ATEX) EPT 16 ATEX 2502 Gas and dust $\text{Ex II 2 G Ex eb IIC Gb}$ $\text{Ex II 2 D Ex tb IIIC Db}$ Certificates IECEx; ATEX Degree of protection IP66 Ambient temperature -40°C~+70°C Material PA66 (Polyamide) Function To be used at spare entries of explosion-proof equipment; made of plastic; Corrosion-proof and waterproof; Metric thread is standard type. Supplied with seal gasket.						
Note: Shall be used together with locknut.						



Selection table of DQM-I/I Ex e stopping rod

Version	Specification	Dimensions (mm)			Ordering code	Weight (kg)
		L	D	d		
  <p>DQM-I/I Ex e stopping rod</p>	Φ8 (for M16×1.5, M20×1.5)	24	10	7.5	713001	0.05
	Φ12 (for M25×1.5, M32×1.5)	28	13	11.5	713002	0.05
	Φ23 (for M40×1.5)	34	27	23	713003	0.05
	Φ32 (for M50×1.5, M63×1.5)	34	35	32	713004	0.05
	Material: Plastic Ambient temperature: -40°C~+55°C Function: Suitable for DQM-I/I Ex e unarmored cable gland (see P6/19).					

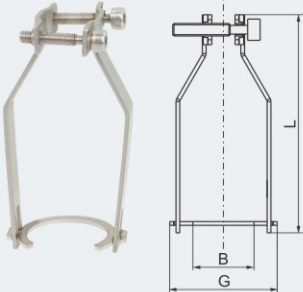
Accessories

Selection table of BPS(H) explosion-proof drain plug (Breather)


<p>BPS(H)-I</p> 	<p>Explosion protection</p> <p>Global (IECEX) IECEx CQM 22.0023X Gas and dust Ex db IIC T6/T5/96°C (T4) Gb Ex tb IIIC T80°C/T95°C/T130°C Db</p> <p>Europe (ATEX) TÜV CY 23 ATEX 0206872U Gas and dust Ex II 2 G Ex db IIC T6/T5/96°C (T4) Gb Ex II 2 D Ex tb IIIC T80°C/T95°C/T130°C Db</p> <p>Certificates IECEx; ATEX; CU-TR</p> <p>Conformity to standards EN 60079-0, EN 60079-1, EN 60079-31 IEC 60079-0, IEC 60079-1, IEC 60079-31</p> <p>Material SS316 (SS304, SS316L is optional)</p> <p>Thread specification M20×1.5</p> <p>Degree of protection IP66</p> <p>Ambient temperature T6 for Tamb: -60°C~+44°C T5 for Tamb: -60°C~+59°C 96°C(T4) for Tamb: -60°C~+60°C</p>
<p>BPS(H)-II</p> 	<p>Explosion protection</p> <p>Global (IECEX) IECEx CQM 22.0023X Gas and dust Ex eb IIC T6...T4 Gb Ex tb IIIC T80°C/T95°C/T130°C Db</p> <p>Europe (ATEX) TÜV CY 23 ATEX 0206872U Gas and dust Ex II 2 G Ex eb IIC T6...T4 Gb Ex II 2 D Ex tb IIIC T80°C/T95°C/T130°C Db</p> <p>Certificates IECEx; ATEX; CU-TR</p> <p>Conformity to standards EN 60079-0, EN 60079-7, EN 60079-31 IEC 60079-0, IEC 60079-7, IEC 60079-31</p> <p>Material Brass (SS304, SS316, SS316L is optional)</p> <p>Thread specification M20×1.5</p> <p>Degree of protection IP66</p> <p>Ambient temperature T6/T80°C for Tamb: -60°C~+80°C T5/T95°C for Tamb: -60°C~+95°C T4/T130°C for Tamb: -60°C~+130°C</p>




Selection table of cable clamp

Version	Size Code	Dimensions (mm)			Applicable cable outer diameter (Φ)	For DQM-I/II, DQM-I/III DQM-II/III, DQM-III/I DQM-III/II, DQM-CF	Hexagon socket	Ordering code	Weight (kg)
		B	L	G					
	A	25	76	37.5	5.5~16	M20A M20B M25A	#3	722001	0.026
	B	30	88	43	12.5~20.5	M20C M25B M32A	#4	722002	0.045
	C	38	88	53	17~26	M25C M32B M40A	#4	722003	0.047
	D	45	95	60	22~33	M32C M40B M50A	#4	722004	0.056
	E	56	95	71	28~41	M40C M50B M63A	#4	722005	0.057
<p>Material: Stainless steel</p> <p>Function: For DQM Series Explosion-proof Cable Glands, providing additional anti-pulling measures.</p> <p>Note: Dimensions B and G are available for customization.</p>									

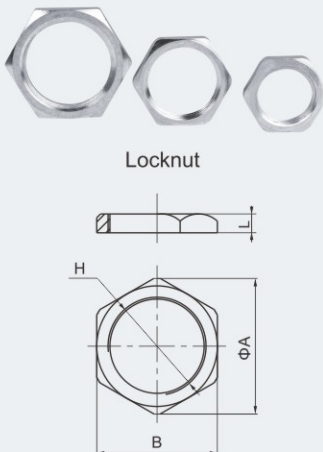
Selection table of earth lug

Version	Specification (ΦA, mm)	Rated short circuit current per second (kA)	Ordering code	Weight (kg)
 <p>Earth lug</p>	20	3.0	718001	0.05
	25	4.0	718002	0.05
	32	5.4	718003	0.05
	40	7.2	718004	0.05
	50	10.4	718005	0.10
	63	10.4	718006	0.10
	75	10.4	718007	0.15
	90	10.4	718008	0.20
	115	10.4	718009	0.30
Material: Nickel plated brass Function: Earth connection.				

Selection table of shroud

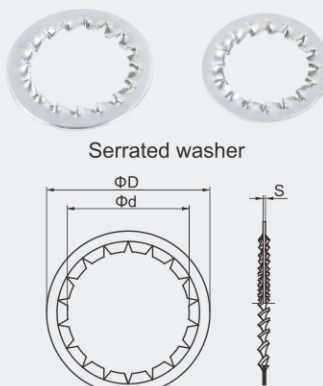
Version	Size Code	Dimensions (mm)			For						Ordering code		Weight (kg)
					DQM-I		DQM-II		DQM-III				
		B	L	L1	DQM-I/II	DQM-I/III	DQM-II/I	DQM-II/III	DQM-III/I	DQM-III/II	PVC	PCP	
 <p>Shroud</p>	A	30	116	60	M20	M20A M20B M25A	M20	M20A M20B M25A	M20A M20B M25A	M20A M20B M25A	717001	717101	0.015
	B	36	110	65	M25	M20C M25B M32A	M25	M20C M25B M32A	M25B M32A	M20C M25B M32A	717002	717102	0.019
	C	44	125	70	M32	M25C M32B M40A	M32	M25C M32B M40A	M32B M40A	M25C M32B M40A	717003	717103	0.027
	D	53	140	75	M40	M32C M40B M50A	M40	M32C M40B M50A	M40B M50A	M32C M40B M50A	717004	717104	0.073
	E	64	145	85	M50	M40C M50B M63A	M50	M40C M50B M63A	M50B M63A	M40C M50B M63A	717005	717105	0.100
	F	76	155	95	M63	M50C M63B M75A	M63	M50C M63B M75A	M63B M75A	M50C M63B M75A	717006	717106	0.165
	G	92	185	115	M75	M63C M75B	M75	M63C M75B	M75B	M63C M75B	717007	717107	0.200
	H	108	200	120	-	M75C	M90	M75C	-	M75C	-	717108	0.250
	I	120	205	125	-	M90	-	M90	-	M90	-	717109	0.350
	J	136	225	130	-	M115	M115	M115	-	M115	-	717110	0.450
Material: Polyvinyl chloride (PVC), Polychlorinated phenylene polyamide (PCP) Function: For fitting over cable glands when additional environmental and corrosion protection is required.													

Selection table of locknut

Version	Entry thread "H"		Dimensions (mm)			Ordering code	Weight (kg)
	Metric	G	A	B	L		
 <p>Locknut</p> <p>Diagram showing locknut components and dimensions: H (height), ΦA (outer diameter), and B (width).</p>	M16	-	22	19	3.5	714001	0.003
	M20	1/2"	27	24	3	714002	0.005
	M25	3/4"	33	30	3	714003	0.012
	M32	1"	41	37	5	714004	0.017
	M40	1 1/4"	50	46	5	714005	0.026
	M50	1 1/2"	60	55	5	714006	0.028
	M63	2"	73	68	5	714007	0.055
	M75	2 1/2"	88	83	6	714008	0.078
	M90	3"	103	98	6	714009	0.146
	M115	4"	128	123	6	714010	0.255

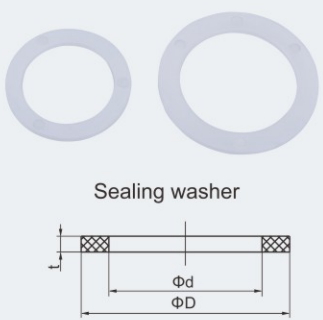
Material: Galvanized carbon steel, nickel plated brass or stainless steel.
Function: Secures a cable gland in position at the equipment.
Note: 1. Metric thread is standard type; G thread or NPT thread is optional. Please specify material when ordering. The above weight is based upon carbon steel.
 2. Metric threads are 1.5mm pitch as standard, others thread pitch can be customized, please specify when ordering.

Selection table of serrated washer

Version	Specification	Dimensions (mm)			Ordering code	Weight (kg)
		D	d	s		
 <p>Serrated washer</p> <p>Diagram showing serrated washer components and dimensions: ΦD (outer diameter), Φd (inner diameter), and S (serration height).</p>	For M20×1.5	33	21	1.5	715001	0.005
	For M25×1.5	37	27.5	1.5	715002	0.006
	For M32×1.5	45.5	34	1.5	715003	0.008
	For M40×1.5	55	42.5	1.5	715004	0.010
	For M50×1.5	64.5	50.5	1.5	715005	0.014
	For M63×1.5	78	63.5	1.5	715006	0.024
	For M75×1.5	92.5	75.5	1.5	715007	0.033

Material: Stainless steel
Function: For use on cable gland entry threads.

Selection table of sealing washer

Version	Specification	Dimensions (mm)			Ordering code	Weight (kg)
		D	d	t		
 <p>Sealing washer</p> <p>Diagram showing sealing washer components and dimensions: Φd (inner diameter), ΦD (outer diameter), and t (thickness).</p>	For M16×1.5	22	16	2	716010	0.0010
	For M20×1.5	27	20	2	716001	0.0010
	For M25×1.5	32	25	2	716002	0.0018
	For M32×1.5	39	32	2	716003	0.0019
	For M40×1.5	48	40	2	716004	0.0025
	For M50×1.5	58	50	2	716005	0.0031
	For M63×1.5	72	63	2	716006	0.0045
	For M75×1.5	85	75	2	716007	0.0051
	For M90×1.5	100	90	2	716008	0.0130
	For M115×1.5	126	115	2	716009	0.0122

Material: Teflon (PTFE)
Function: For use on cable gland entry threads.